



**VINAYAKA MISSION'S
RESEARCH FOUNDATION**
(Deemed to be University under section 3 of the UGC Act 1956)



**School of Rehabilitation
and Behavioral Sciences
Puducherry**

CONSULTANCY SERVICES BROCHURE

Dr. Arun Banik

Director (i/c), SRBS,
AVMC & H, VMRF - DU,
9869233620, arunbanik.amarchandbanik@avmc.edu.in

Dr. J. Prajna Bhat

Professor & HOD, Dept of Audiology
SRBS, AVMC & H, VMRF - DU,
8618045516, praj nabhat.rajaramnayak@avmc.edu.in

Dr. E. Sambandam

Associate Professor & HOD, Dept of Clinical Psychology,
SRBS, AVMC & H, VMRF - DU,
7904886935, sambandam.ethiraj@avmc.edu.in

SCHOOL OF REHABILITATION AND BEHAVIORAL SCIENCES

VINAYAKA MISSION'S RESEARCH FOUNDATION

(Deemed to be Univeristy)

Aarupadai Veedu Medical College and Hospital Campus

Pondy - Cuddalore Main Road, Kirumampakkam, Puducherry - 607 403. India.

ABOUT THE COLLEGE

Vinayaka Missions had its inception in the year 1981. The "Deemed to be University" status was conferred on Vinayaka Missions in 2001 by the Ministry of Human Resources Development, Government of India, with the recommendations of the UGC Under Section 3 of the UGC Act, 1956.

The Department of Audiology and Speech-Language Pathology was started in the year 2003, with a Diploma Programme in Speech and Hearing. The Undergraduate Degree Programme, B.ASLP., was initiated in the year 2004.

The department was upgraded into a full-fledged institution in the name of "School of Rehabilitation and Behavioral Sciences" in the academic year, 2021-2022. The Rehabilitation Council of India had given approval for two Postgraduate programs Viz M.Sc. (Audiology) and M. Sc.(Speech-Language Pathology).

With the upgradation into a separate "School of Rehabilitation and Behavioral Sciences", three Departments were started: the Department of Audiology, the Department of Speech-Language Pathology, and the Department of Clinical Psychology.

In addition to the previous programs, in 2023, the Rehabilitation Council of India has given approval for M. Phil. Clinical Psychology and Post Graduate Diploma in Early Intervention. The University has approved to start the M. Sc Clinical Psychology program too from the year 2023-24.

The University has formed a separate "Faculty of Rehabilitation and Behavioral Sciences" under which all these programs are monitored.

The School of Rehabilitation and Behavioral Sciences is committed to its Vision and Mission, to emerge as a World class institution that upholds the highest standards of education in the field of Rehabilitation and Behavioral Sciences. We have a team of dedicated, hardworking, and caring faculty members who work round the clock towards student development and professional upliftment.

VISION

To emerge as a world class institution that upholds the highest standards of education in the field of Rehabilitation and Behavioral Sciences.

MISSION

To establish excellent training facilities, state-of-the-art diagnostic and therapeutic facilities and to involve in research activities with National and International Organizations upholding human values.

DEPARTMENT OF AUDIOLOGY

ABOUT THE DEPARTMENT

The Department of Audiology offers graduate, postgraduate, and doctoral programs in Audiology recognized by the Rehabilitation Council of India. The Department is equipped with state-of-the-art infrastructure and leading-edge modern generation instruments comparable with international standards.

These include Audiometers for performing Pure Tone Audiometry, Speech Audiometry, Visual Reinforcement Audiometry, and other Behavioural testing for patients. In addition, state-of-the-art equipment are available to perform Physiological (Tympanometry, Reflexometry, Wideband reflectance), Electrophysiological (ABR, EcochG, MLR, LLR, etc), Vestibular tests (VEMP), Electroacoustic measurements and Real Ear Measurements.

The department caters to assessment, diagnosis, and rehabilitation of patients of varied age groups ranging from newborns to geriatrics. The department is managed by experienced faculties who provide guidance and training to the students. The department's research projects have reached a degree of worldwide agency collaboration that transcends national boundaries. The students trained in the department are well placed in hospitals, schools, and academic set ups in India and around the world.

AREAS FOR THE CONSULTANCY SERVICES

- ➔ New born hearing screening
- ➔ School hearing screening including central auditory processing evaluation
- ➔ Corporate hearing screening
- ➔ Industrial Hearing screening
- ➔ Industrial Noise measurement using Sound level meter
- ➔ Hearing assessment in old age homes
- ➔ Awareness lecture on hearing conservation/ aural hygiene/ strategies for effective communication for individuals with hearing impairment
- ➔ Vestibular assessment
- ➔ Tinnitus and Hyperacusis assessment and management

Equipments in the Department



*Pure Tone Audiometer
Resonance R37A*



*Advanced Middle ear analyser
Interacoustics Titan*



*Advanced Audiometer
Interacoustics AC40*



Global FEEL and Clarinet Inventis



*Oto Acoustic Emissions for New born
hearing screening -MAICO ERO SCAN*



*Oto Acoustic Emissions for New born
hearing screening -Neuro Audio screen*



*Electrophysiological Assessment - Neuro
Audio and IHS Duet*



*Noise measurement - Sound Level Meter
and Noise Dosimeter*

DEPARTMENT OF SPEECH LANGUAGE-PATHOLOGY

ABOUT THE DEPARTMENT

The Department of Speech Language Pathology offers graduate, postgraduate courses in Speech Language Pathology recognized by the Rehabilitation Council of India.

The Department of Speech-Language Pathology consists of three units: the Speech and Language Diagnostic Unit, the Speech and Language Therapy Unit, and the Cross Disabilities Early Intervention Centre.

The department provides services to individuals of all ages, including children, adolescents, adults, and geriatrics, with special needs related to communication and swallowing. The department is equipped with facilities for assessing a range of speech and language disorders, such as voice disorders, childhood language disorders, stuttering, speech sound disorders, aphasia, dysphagia, cleft lip and palate, and more.

Additionally, there is a teletherapy service available to reach out to people in remote areas and those who are not able to access direct therapy services due to various reasons.

AREAS FOR THE CONSULTANCY SERVICES

Clinical and/or Instrumental Screening, Assessment, Identification, Diagnosis, Treatment and Management of:

- Speech sound production delays and disorders
- Language delays and disorders
- Fluency disorders
- Voice disorders
- Resonance disorders
- Swallowing and feeding disorders
- Cognitive-communicative disorders
- Pre-literacy and literacy skills
- Communication and swallowing disorders in the context of other diagnoses or impairments
- Development, assessment and selection of Augmentative and Alternative Communication systems

LIST OF TEST MATERIALS



For adults with communication and swallowing difficulties



For children with communication and swallowing difficulties

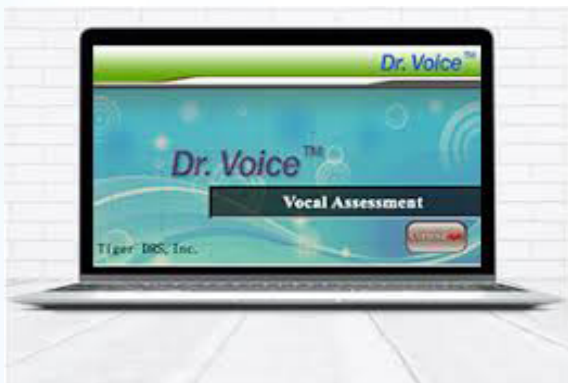
LIST OF INSTRUMENTS



Stroboscopy



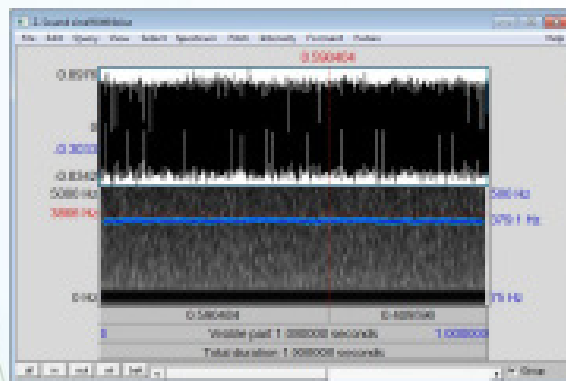
Spirometry



Electroglottography



Nasometry



Acoustic Analysis

EARLY INTERVENTION CENTRE

Early Intervention for children with cross disabilities pervasively extends the scope of practice for the children with Neuro-Muscular, Musculo-skeletal and Developmental disorders. Identifying the risk factors through comprehensive interdisciplinary evaluation components and intervening the disabilities at early stage of child's chronological age from the first day of birth up to 6 years and incorporating successful habilitative and rehabilitative therapeutic approaches is one of the primary aims of the program.

Speech therapists, Occupational Therapists, Special Educators and Clinical Psychologists involved in service delivery in the clinical arena. The diagnostic group comprises cerebral palsy (CP), Autistic spectrum disorders (ASD), Attention deficit hyperactivity disorders (ADHD), Learning disabilities (LD), Intellectual Disability (ID), Degenerative disorders such as Muscular dystrophies, Spinal Muscular Atrophy and other degenerative disorders. Parental nurturing for their children has been under practice through Pre-Linguistic behavioural training, Sensory-Motor activities, Adaptive physical education, Functional Independence connected with school readiness and facilitating Inclusion towards mainstream education in a regular school environment.



Speech Therapy Services



Occupational Therapy



Early Intervention Services



Special Education Services

ABOUT THE DEPARTMENT

The Department of Clinical Psychology was established in 2021 under the School of Rehabilitation and Behavioral Sciences (SRBS), administration control of Vinayaka Mission's Research Foundation (VMRF-DU).

The department runs a two-year regular course in M. Phil-Clinical Psychology which is approved by the Rehabilitation Council of India (RCI), and M. Sc-Clinical Psychology from the academic year 2022-2023.

AREAS FOR THE CONSULTANCY SERVICES

➤ MENTAL HEALTH SERVICES:

1. PSYCHO-DIAGNOSTIC ASSESSMENT AND TESTING

- ➔ Personality,
- ➔ Intelligence
- ➔ Learning and scholastic performance
- ➔ Cognitive assessment
- ➔ Neurotic, psychotic and organic disorder
- ➔ Psychopathology

2. NEUROPSYCHOLOGICAL ASSESSMENT

- ➔ Brain damage
- ➔ Brain disease
- ➔ Developmental disabilities
- ➔ Severe mental illnesses
- ➔ Memory
- ➔ Executive function
- ➔ Attention and concentration
- ➔ Insight & judgement
- ➔ Comprehension

3. PSYCHO-EDUCATION, GUIDANCE AND COUNSELLING

4. PSYCHO-THERAPEUTIC TREATMENT FOR VARIOUS MENTAL HEALTH PROBLEMS

- Cognitive Behaviour Therapy (CBT)
- Behaviour Therapy (BT)
- Motivational Enhancement Therapy (MET)
- Rational Emotive Therapy (RET)
- Exposure and Response Prevention Therapy (ERP)
- Family/couple Therapy
- Group Psychotherapy
- Supportive Psychotherapy
- Solution Focused Behaviour therapy(SFBT)
- Mindfulness-Based Therapy

5. AWARENESS GENERATION AND PUBLICITY SERVICES

6. INTENSIVE PARENTS TRAINING PROGRAM

SERVICES



Psycho-Diagnostic Assessment



Neuropsychological Assessment



Group Therapy



Intensive Parents Training Program



Awareness And Publicity Services

PSYCHOLOGICAL MATERIALS



Psycho-Diagnostic Assessment And Test Materials



Psychological Training Materials



COURSES OFFERED

- ❁ B. ASLP (Bachelor of Audiology and Speech-Language Pathology)
- ❁ M. Sc Audiology
- ❁ M. Sc Speech Language Pathology
- ❁ M. Sc Clinical Psychology
- ❁ M. Phil. Clinical Psychology
- ❁ PGDEI (Post Graduate Diploma in Early Intervention)
- ❁ PGDYT (Post Graduate Diploma in Yoga Therapy) (Approval Pending)



Smart Class Room

FOR CONTACT:

Website: www.srbsvmrf.edu.in

Email Id: director.srbs@vmu.edu.in

Mobile: 96006 25777